



**BENCHMARK**  
THE SMARTER CHOICE

# Trouser Collection



White

Royal Blue

Bottle  
GreenSailor  
Navy

# Welcome...

Benchmark are proud to present to you our latest Trousers Collection showcasing our most comprehensive range to date. All products are held in our new state of the art Garment Distribution Centre in Worsley, Manchester for immediate delivery. Our large and diverse range of men's & ladies' trousers & shorts - has something for everyone regardless of the industry you work in.

With Benchmarks meticulous attention to detail and superior fabrics, our garments are designed and built to outperform the very best, they really are 'the SMARTER choice'!

To make it easier for you find the right product we have introduced our trouser browser. All styles are displayed in a clear concise manner with large images and additional garment detail with easy to read descriptions, making it simpler for you and your clients to make their buying decisions.

Having recently updated our IT systems Benchmark are proud to offer our 'Self Serve' on line portal giving a totally transparent view of Stocks, Order Progress, Accounts and the ability to order on line to be delivered within 24 hours.

Spruce  
GreenElephant  
Grey

Maroon

French  
Navy

Red

Black

# Benchmark Trousers – ‘The SMARTER choice’

## Who we are...

The Benchmark mission is to provide our customers with a high quality, competitively priced trouser that will enable them to be competitive and profitable, complimented by exceptional customer service and to work in partnership with our network of distributors with the aim of growing our brand, supporting your growth and being your number one supplier!

Benchmark specialise in manufacturing high quality, hard wearing work wear trouser suitable for a variety of uses and sold through a network of distributors and resellers.

We are part of the P&R Fabric group who are a modern, forward thinking premier fabric supplier that has over 50 years trading history with the skills and ability to produce technical fabrics for a diverse textile apparel market. The group specialises in the manufacture of bespoke technical and corporate workwear solutions for the healthcare, hospitality and Military markets. Utilising their network of partners worldwide, they provide initial design/concept, production process, QC and logistics.

### Benchmark Product

Benchmark products are meticulously designed for comfort, durability and include a style for every use. We listen to our customers and based on their feedback we have developed a range of trousers for a female worker that compliments their body shape, allowing them to move freely and work more effectively and safely.

### Benchmark Service

With our recent move to our newly developed centralised Office, Warehouse and Distribution Centre, your Benchmark team are ideally placed to support you and work in partnership with you. We will always endeavour to help you out and provide that extra layer of service that will

enable you to fulfil your orders to your end user requirements. We will always strive to exceed expectation but will manage those expectations with a transparent and honest description of what we can do and what we can't. Queries and enquiries are dealt with promptly and effectively and our can do attitude is one of our core strengths and unique selling points.

### Benchmark Values

The Benchmark team take a pride in the service we offer, the robust quality of our product and the pride that we place on quality. We are aware of our duties and responsibilities to the environment and place a strong emphasis on ethical trading throughout our supply chain.



## Our mission...

Benchmark really are ‘The SMARTER choice’ for work trousers, we offer something for everyone with an exceptional choice of colour variations and size range. With the backing of the P&R group, our expertise in manufacturing fabrics and garments we can offer reliability of high quality garments, stock, service & support that will enable you to be competitive, profitable and reliable.

Gender	Style	Code	Description	Colours Available	Page
Male	Classic	T20	Men's Classic Trouser		6
Male	Cargo	T31	Men's Cargo Trouser		6
Male	Cargo	T38	Knee Pad Cargo Trouser		7
Male	Classic	T35	Men's Reflective Classic Work Trouser		7
Male	Cargo	T27	Men's Reflective Cargo Trouser		8
Male	Cargo	T39	Reflective Knee Pad Cargo Trouser		8
Male	Cargo	T23	Safety Cargo Trouser		9
Male	Cargo	T42	Tradesman Trouser		9
Male	Shorts	T45	Men's Classic Work Shorts		10
Male	Shorts	T32	Men's Cargo Shorts		10
Male	Shorts	T48	Tradesman Shorts		10
Female	Classic	T24	Ladies Classic Work Trousers		11
Female	Cargo	T28	Ladies Cargo Trousers		11
Female	Classic	T44	Ladies Reflective Classic Work Trousers		12
Female	Cargo	T46	Ladies Reflective Cargo Trousers		12
Female	Shorts	T47	Ladies Classic Shorts		13
Female	Shorts	T37	Ladies Cargo Shorts		13
Female	Formal	T33	Ladies Hospitality Trousers		14
Male	Formal	T29	Men's Hospitality Trousers		14
Female	Formal	T36	Ladies Security Trousers		15
Male	Formal	T34	Men's Security Trousers		15

## Colours...

	Black		French Navy		Red		Spruce Green
	Bottle Green		Maroon		Royal Blue		White
	Elephant Grey		North Navy		Sailor Navy		

# The smarter choice for work trousers...

With our attention to detail and superior fabrics, our garments are designed and built to outperform the very best.

- **Female Styles**
- **Male Styles**
- **Office, Work and Safety Trousers & Shorts**
- **Large Colour Range**
- **65/35 Poly/Cotton**
- **85° Washable**
- **Hard Wearing**



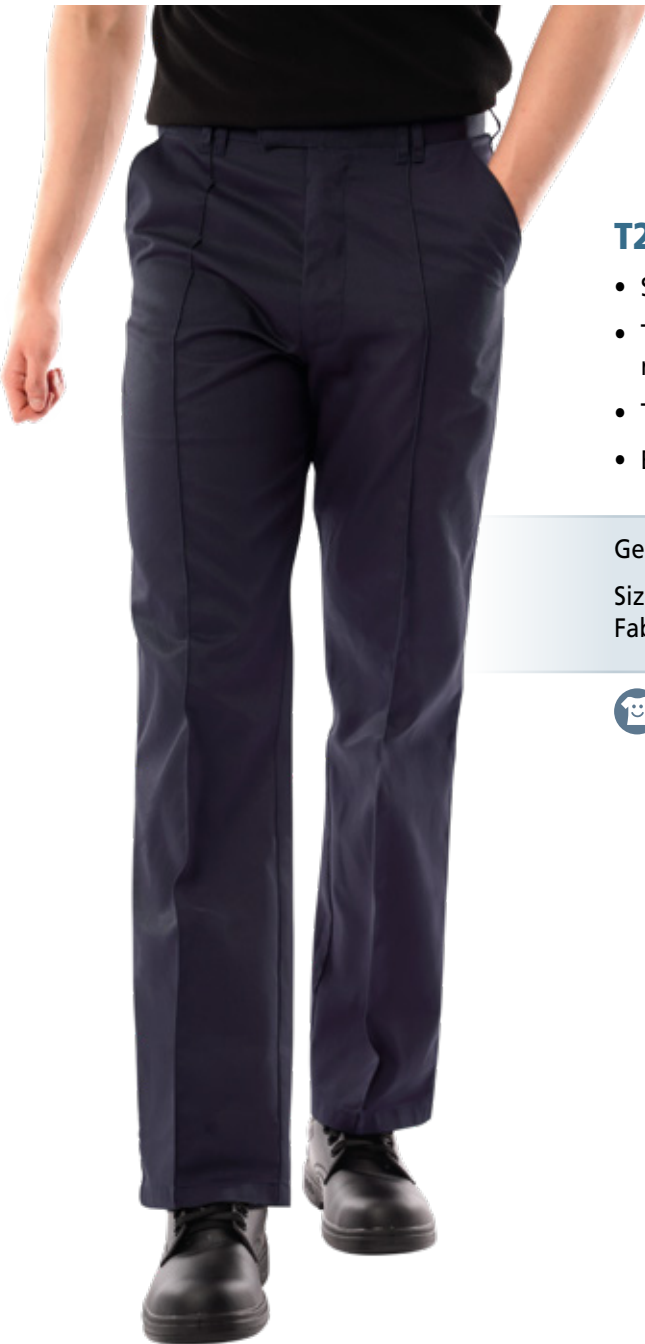
**Easy Care**



**Durable**



**Wash Temp.**



### T20 - Men's Classic Work Trousers

- Sewn-in front creases with flat front styling
- Two diagonal opening hip pockets and one rear jetted pocket with button/loop fastening
- Twin hook and bar fastening and YKK Zip
- Bar tacked at all stress points



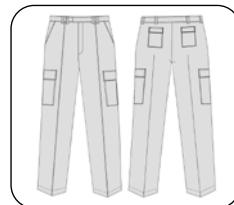
Gender: Male

Sizes: Waist 28" - 52" Length: (R) 31", (S) 29", (T) 33"  
Fabric: 65% Polyester, 35% Cotton Weight: 245gsm



### T31 - Men's Cargo Trousers

- Sewn-in front creases with flat front styling
- Two diagonal opening hip pockets and two rear jetted pockets with Velcro fastening flaps. Pleated cargo pockets with Velcro fastening flap on each thigh
- Twin hook and bar fastening and YKK Zip
- Bar tacked at all stress points



Gender: Male

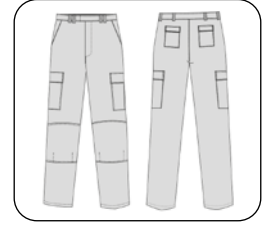
Sizes: Waist 28" - 52" Length: (R) 31", (S) 29", (T) 33"  
Fabric: 65% Polyester, 35% Cotton Weight: 245gsm





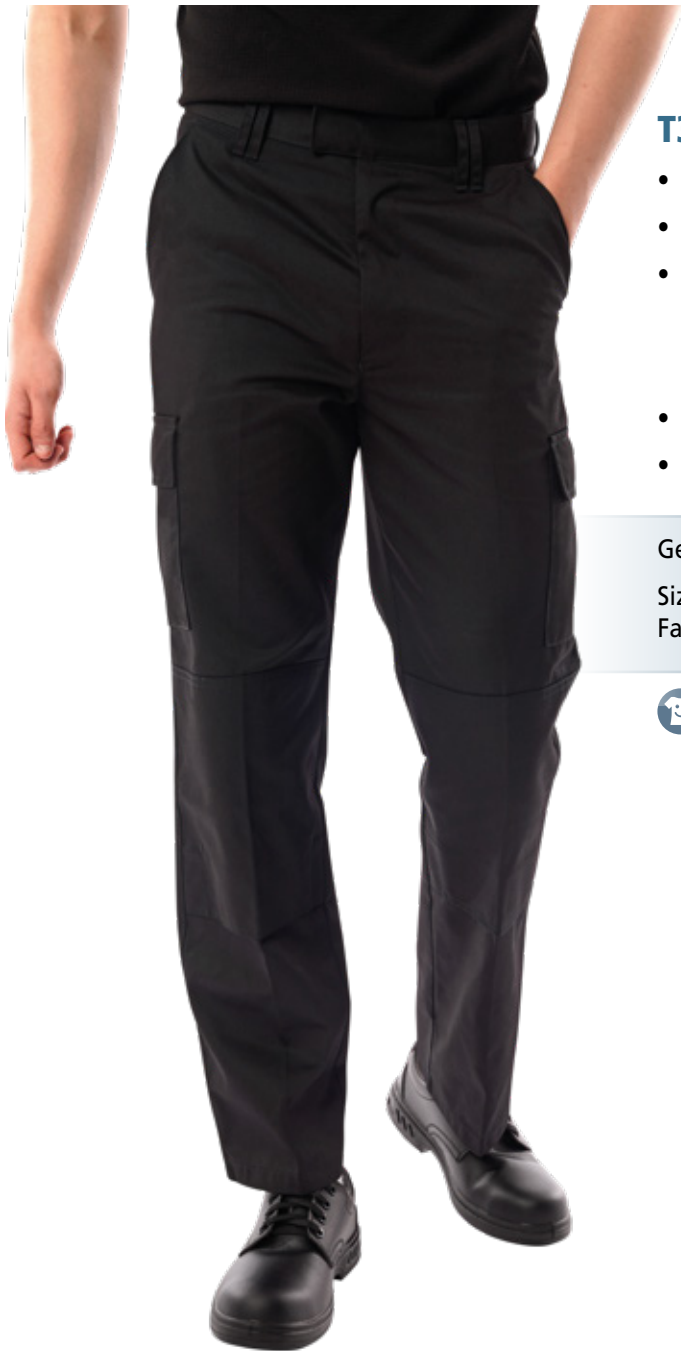
### T38 - Men's Kneepad Cargo Trouser

- External, bottom loading knee pad pockets
- Flat front styling
- Two diagonal opening hip pockets and two rear jetted pockets with Velcro fastening flaps. Two pleated cargo pockets with Velcro fastening flap
- Twin hook and bar fastening and YKK Zip
- Bar tacked at all stress points



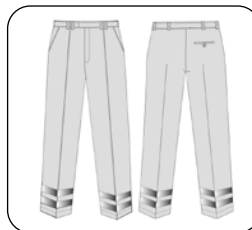
Gender: Male

Sizes: Waist 28" - 52" Length: (R) 31", (S) 29", (T) 33"  
Fabric: 65% Polyester, 35% Cotton Weight: 245gsm



### T35 - Men's Reflective Classic Work Trouser

- Twin bands of 50mm reflective tape on each calf
- Sewn-in front creases with flat front styling
- Two diagonal opening hip pockets and one rear jetted pocket with button/loop fastening
- Twin hook and bar fastening and YKK Zip
- Bar tacked at all stress points



Gender: Male

Sizes: Waist 28" - 52" Length: (R) 31", (T) 33"  
Fabric: 65% Polyester, 35% Cotton Weight: 245gsm

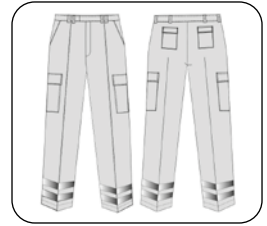




## T27 - Men's Reflective Cargo Trouser



- Twin bands of 50mm reflective tape on each calf
- Sewn-in front creases with flat front styling
- Two diagonal opening hip pockets and two rear jetted pockets with Velcro fastening flaps. Two pleated cargo pockets with Velcro fastening flap
- Twin hook and bar fastening and YKK Zip
- Bar tacked at all stress points



Gender: Male

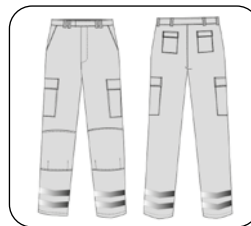
Sizes: Waist 28" - 52" Length: (R) 31", (T) 33"

Fabric: 65% Polyester, 35% Cotton Weight: 245gsm



## T39 - Men's Reflective Kneepad Cargo Trouser

- External, bottom loading knee pad pockets
- Twin bands of 50mm reflective tape
- Sewn-in front creases with flat front styling
- Two diagonal opening hip pockets and two rear jetted pockets with Velcro fastening flaps. Pleated cargo pockets with Velcro fastening flap
- Twin hook and bar fastening and YKK Zip
- Bar tacked at all stress points



Gender: Male

Sizes: Waist 28" - 52" Length: (R) 31", (S) 29", (T) 33"

Fabric: 65% Polyester, 35% Cotton Weight: 245gsm

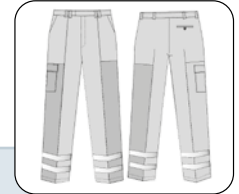






## T23 - Men's Safety Cargo Trouser

- Colour matched ballistic nylon on both legs from bottom hem to upper thigh on outer half of leg
- Twin bands of 50mm reflective tape
- Pressed front creases with flat front styling with hard wearing ballistic hem trim
- Two diagonal opening hip pockets and one rear jetted pockets button/loop fastening flap. One double layered cargo pocket with multi sections, rule pocket and hammer loop
- Twin hook and bar fastening and YKK Zip
- Bar tacked at all stress points



Gender: Male

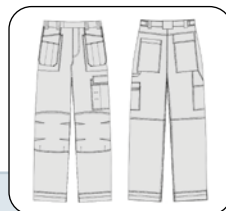
Sizes: Waist 28" - 52" Length: (R) 31", (T) 33"

Fabric: 65% Polyester, 35% Cotton Weight: 245gsm



## T42 - Men's Tradesman Trouser

- Stylish contrast stitching
- Ballistic nylon bottom loading, external knee pad pockets
- Two front pockets with tuck away multi section holster pockets, two rear patch pockets and one double layered cargo pocket with multi sections, rule pocket and hammer loop
- Hard wearing ballistic hem trim
- Velcro fastening adjustable waist
- Twin hook and bar fastening and YKK Zip
- Bar tacked at all stress points



Gender: Male

Sizes: Waist 28" - 52" Length: (R) 31", (S) 29", (T) 33"

Fabric: 65% Polyester, 35% Cotton Weight: 245gsm



## T45 - Men's Classic Work Shorts



- Sewn-in front creases with flat front styling
- Two diagonal opening hip pockets and one rear jetted pocket with button/loop fastening
- Twin hook and bar fastening and YKK Zip
- Bar tacked at all stress points



Gender: Male

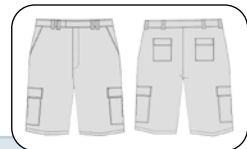
Sizes: Waist 28" - 52"

Fabric: 65% Polyester, 35% Cotton Weight: 245gsm



## T32 - Men's Cargo Shorts

- Flat front styling
- Two diagonal opening hip pockets and two rear jetted pockets with Velcro fastening flaps. Pleated cargo pockets with Velcro fastening flap
- Twin hook and bar fastening and YKK Zip
- Bar tacked at all stress points



Gender: Male

Sizes: Waist 28" - 52"

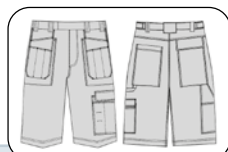
Fabric: 65% Polyester, 35% Cotton Weight: 245gsm



## T48 - Men's Tradesman Shorts



- Stylish contrast stitching
- Two front pockets with tuck away multi section holster pockets, two rear patch pockets and one double layered cargo pocket with multi sections, rule pocket and hammer loop
- Velcro fastening adjustable waist
- Twin hook and bar fastening and YKK Zip
- Bar tacked at all stress points



Gender: Male

Sizes: Waist 28" - 52"

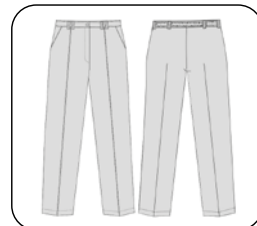
Fabric: 65% Polyester, 35% Cotton Weight: 245gsm





### T24 - Ladies Classic Work Trouser

- Sewn-in front creases with flat front styling
- Rear elasticated waist
- Two diagonal opening hip pockets
- Button fastening and YKK Zip
- Bar tacked at all stress points



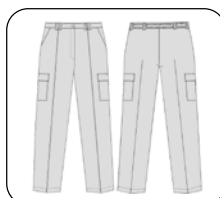
Gender: Female

Sizes: Hips 30" - 52" (8-30) Length: (R) 31", (XS) 27", (S) 29", (T) 33"  
 Fabric: 65% Polyester, 35% Cotton Weight: 195gsm



### T28 - Ladies Cargo Trouser

- Sewn-in front creases with flat front styling
- Rear elasticated waist
- Two diagonal opening hip pockets and two pleated cargo pockets with Velcro fastening flap
- Button fastening and YKK Zip
- Bar tacked at all stress points



Gender: Female

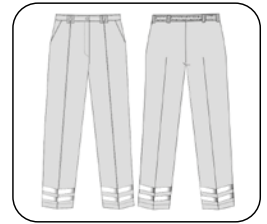
Sizes: Hips 30" - 52" (8-30) Length: (R) 31", (XS) 27", (S) 29", (T) 33"  
 Fabric: 65% Polyester, 35% Cotton Weight: 195gsm





### T44 - Ladies Reflective Classic Work Trouser

- Twin bands of 50mm reflective tape on each calf
- Sewn-in front creases with flat front styling
- Rear elasticated waist
- Two diagonal opening hip pockets
- Button fastening and YKK Zip
- Bar tacked at all stress points



Gender: Female

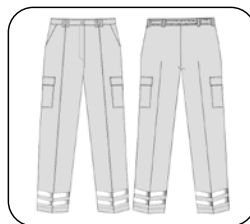
Sizes: Hips 30" - 52" (8-30) Length: (R) 31", (XS) 27", (S) 29", (T) 33"

Fabric: 65% Polyester, 35% Cotton Weight: 195gsm



### T46 - Ladies Reflective Cargo Trouser

- Twin bands of 50mm reflective tape
- Sewn-in front creases with flat front styling
- Rear elasticated waist
- Two diagonal opening hip pockets and two pleated cargo pockets with Velcro fastening flap
- Twin hook and bar fastening and YKK Zip
- Bar tacked at all stress points



Gender: Female

Sizes: Hips 30" - 52" (8-30) Length: (R) 31", (T) 33"

Fabric: 65% Polyester, 35% Cotton Weight: 195gsm

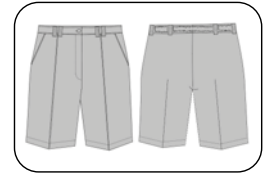




## T47 - Ladies Classic Shorts



- Sewn-in front creases with flat front styling
- Rear elasticated waist
- Two diagonal opening hip pockets
- Button fastening and YKK Zip
- Bar tacked at all stress points



Gender: Female

Sizes: Hips 30" - 54" (8-30)

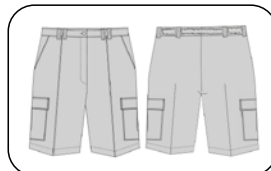
Fabric: 65% Polyester, 35% Cotton Weight: 195gsm



## T37 - Ladies Cargo Shorts



- Sewn-in front creases with flat front styling
- Rear elasticated waist
- Two diagonal opening hip pockets and two pleated cargo pockets with Velcro fastening flap
- Button fastening and YKK Zip
- Bar tacked at all stress points

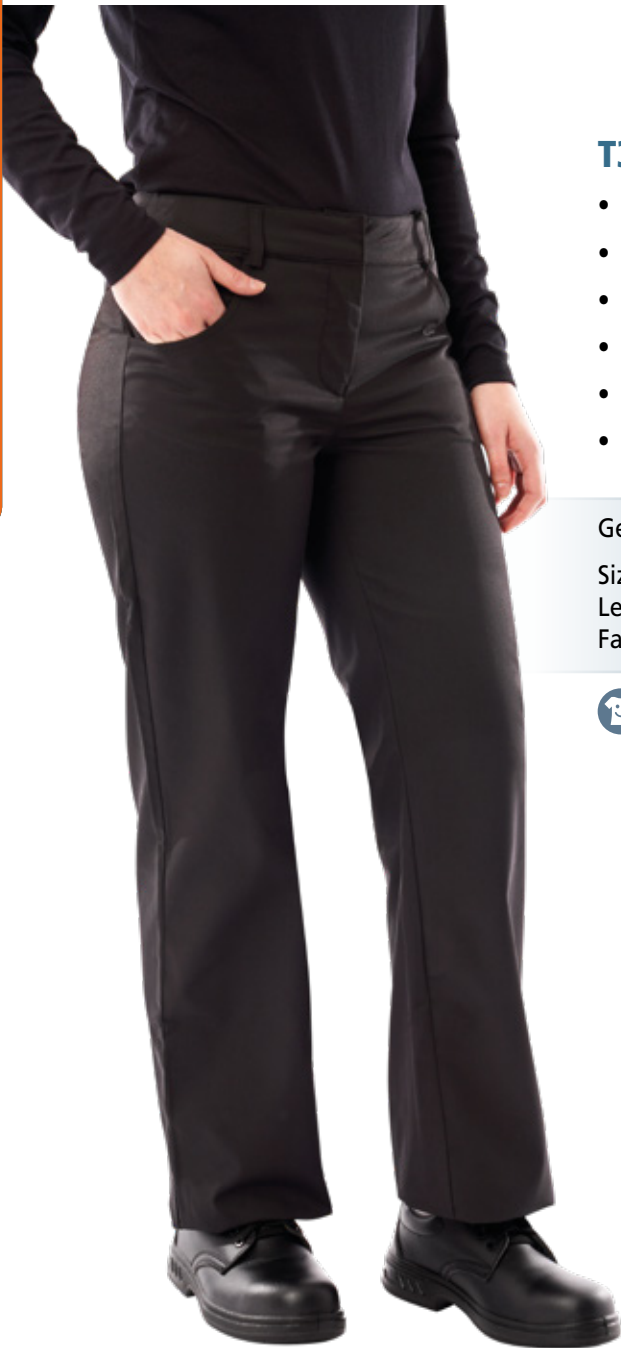


Gender: Female

Sizes: Hips 30" - 54" (8-30)

Fabric: 65% Polyester, 35% Cotton Weight: 195gsm

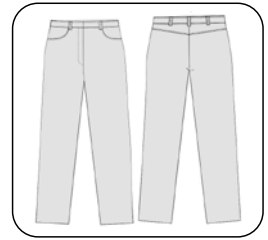




### T33 - Ladies Hospitality Trouser



- Flexi-Stretch fabric
- Flat front styling
- Back yoke detail for comfort fit
- Two curved frog mouth swing pockets
- Button fastening and YKK Zip
- Bar tacked at all stress points



Gender: Female

Sizes: Hips 30" - 54" (8-30)

Length: Unhemmed 37", supplied with easy hemming kit.

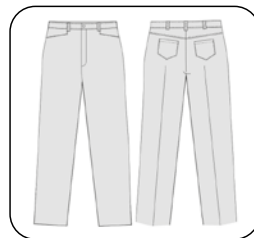
Fabric: 65% Polyester, 35% Cotton Weight: 215gsm



### T29 - Men's Hospitality Trouser



- Flexi-Stretch fabric
- Flat front styling
- Back yoke detail for comfort fit
- Two retro style frog mouth swing pockets, two rear patch pockets
- Button fastening and YKK Zip
- Bar tacked at all stress points



Gender: Male

Sizes: Waist 28" - 52"

Length: Unhemmed 37", supplied with easy hemming kit.

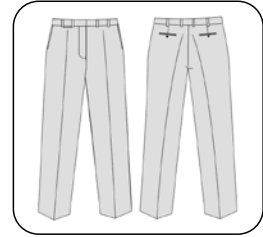
Fabric: 65% Polyester, 35% Cotton Weight: 215gsm





### T36 - Ladies Security Trouser

- Pressed front creases
- Two side hip pockets and two rear jetted pockets with button/loop fastening
- Cash pocket at front waistband
- Twin hook and bar fastening and YKK Zip
- Bar tacked at all stress points



Gender: Female

Sizes: Hips 30" - 54" (8-30)

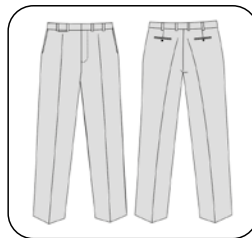
Length: Unhemmed 37", supplied with easy hemming kit.

Fabric: 70% polyester, 30% wool Weight: 275gsm



### T34 - Men's Security Trouser

- Pressed front creases
- Two side hip openings and two rear jetted pockets with button/loop fastening
- Cash pocket at front waistband
- Shirt gripper at inner waistband
- Twin hook and bar fastening and YKK Zip
- Bar tacked at all stress points

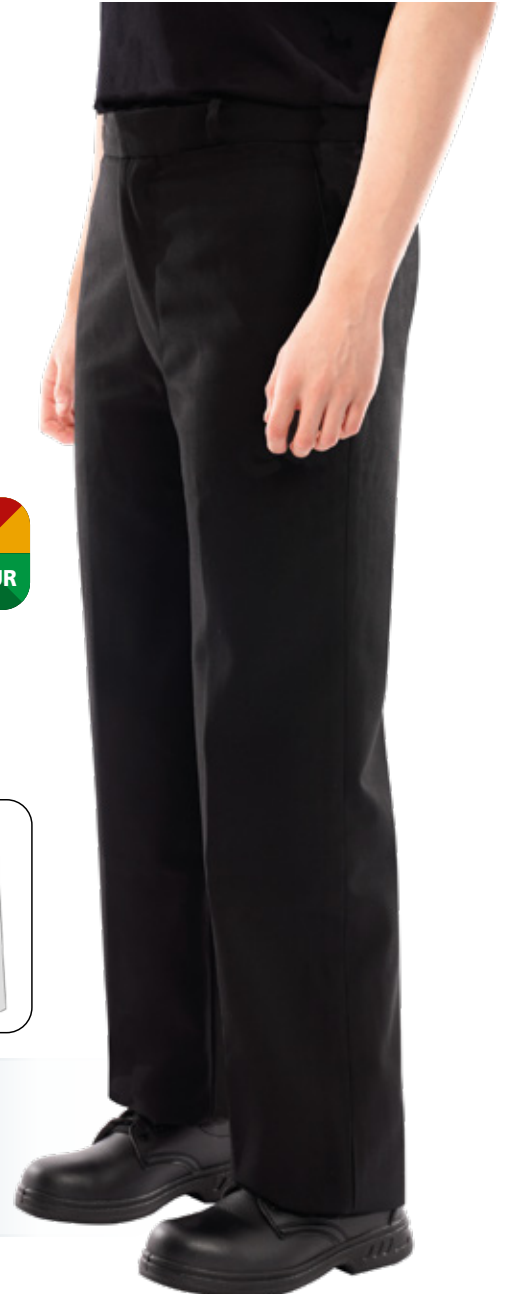


Gender: Male

Sizes: Hips 30" - 54" (8-30)

Length: Unhemmed 37", supplied with easy hemming kit.

Fabric: 70% polyester, 30% wool Weight: 275gsm





## Benchmark Trousers Colour and Style Matrix

**Men's Range**



**T20**  
Men's Classic Work Trousers  
Waist 28" - 52"  
(S) 29"\* (R) 31"  
(T) 33"



**T31**  
Men's Cargo Trousers  
Waist 28" - 52"  
(S) 29"\* (R) 31"  
(T) 33"



**T38**  
Men's Kneepad Cargo Trousers  
Waist 28" - 52"  
(S) 29" (R) 31"  
(T) 33"



**T42**  
Men's Tradesman Trousers  
Waist 28" - 52"  
(S) 29" (R) 31"  
(T) 33"



**T29**  
Men's Hospitality Trousers  
Waist 28" - 52"  
Unhemmed 37"



**T34**  
Men's Security Trousers  
Waist 28" - 52"  
Unhemmed 37"

\*Short only available in these colours. \*Short only available in these colours.

Black	*(S)	*(S)				
Bottle Green						
Elephant Grey						
French Navy	*(S)	*(S)				
Maroon						
Red						
Royal Blue						
Sailor Navy						
Spruce Green						
White						



These garments can be **Made to Order** in an array of colour combinations to suit your requirements. **Please call for further information.**

**Men's Range**



**T35**  
Men's Reflective Classic Work Trousers  
Waist 28" - 52"  
(R) 31" (T) 33"



**T27**  
Men's Reflective Cargo Trousers  
Waist 28" - 52"  
(R) 31" (T) 33"



**T39**  
Men's Reflective Kneepad Cargo Trousers  
Waist 28" - 52"  
(S) 29" (R) 31"  
(T) 33"



**T23**  
Men's Safety Cargo Trousers  
Waist 28" - 52"  
(R) 31" (T) 33"



**T45**  
Men's Classic Work Shorts  
Waist 28" - 52"



**T32**  
Men's Cargo Shorts  
Waist 28" - 52"



**T48**  
Men's Tradesman Shorts  
Waist 28" - 52"

Black							
Bottle Green							
Elephant Grey							
French Navy							
Maroon							
Red							
Royal Blue							
Sailor Navy							
Spruce Green							
White							



These garments can be **Made to Order** in an array of colour combinations to suit your requirements. **Please call for further information.**





## Benchmark Trousers Colour and Style Matrix

### Ladies Range



**T24**  
**Ladies Classic Work Trousers**  
Hips 30" - 54"  
(6)\* (8 - 30)  
(XS) 27"\* (S) 29"\*  
(R) 31" (T) 33"

\*Available in these colours only.



**T28**  
**Ladies Cargo Trousers**  
Hips 30" - 54"  
(6)\* (8 - 30)  
(XS) 27"\* (S) 29"\*  
(R) 31" (T) 33"

\*Available in these colours only.



**T44**  
**Ladies Reflective Classic Trousers**  
Hips 30" - 54"  
(6)\* (8 - 30)  
(R) 31" (T) 33"

\*Size 6 only available in these colours only.



**T46**  
**Ladies Reflective Cargo Trousers**  
Hips 30" - 54"  
(6)\* (8 - 30)  
(R) 31" (T) 33"

\*Size 6 only available in these colours only.



**T47**  
**Ladies Classic Work Shorts**  
Hips 30" - 54"  
(6)\* (8 - 30)

\*Size 6 only available in these colours only.



**T37**  
**Ladies Cargo Shorts**  
Hips 30" - 54"  
(6)\* (8 - 30)

\*Size 6 only available in these colours only.

Black	*	*	*	*	*	*
Bottle Green						
Elephant Grey						
French Navy	*	*	*	*	*	*
North Navy						
Royal Blue						
White						



These garments can be **Made to Order** in an array of colour combinations to suit your requirements. **Please call for further information.**



**T33**  
**Ladies Hospitality Trousers**  
Hips 30" - 54" (8 - 30)  
Unhemmed 37"



**T36**  
**Ladies Security Trousers**  
Hips 30" - 54" (8 - 30)  
Unhemmed 37"

Black		
-------	--	--

## Benchmark Sizing

### Benchmark Male Size Chart

Waist inches	28	30	32	34	36	38	40	42	44	46	48	50	52
Waist cm	73	78	83	88	93	98	103	108	113	118	123	128	133
Hip (20cm from under W/B)	97	102	107	112	117	122	127	132	137	142	147	152	157

Male trouser Inside leg lengths:- Short (29" leg), Regular (31" leg), Tall (33" leg)

### Benchmark Female Size Chart

Size:	6*	8	10	12	14	16	18	20	22	24	26	28	30
Waist relaxed	51	56	61	66	71	76	81	86	91	96	101	106	111
Waist extended	78	83	88	93	98	103	108	113	118	123	128	133	138
Hip (20cm from under W/B)	96	101	106	111	116	121	126	131	136	141	146	151	156

Ladies trousers lengths:- XShort (27" leg), Short (29" leg), Regular (31" leg) and Tall (33" leg).

\*Available in black and navy only.

# Garment care advice...



**Washing instructions are included in all garments on the care label. Please refer to these for the exact washing instructions for your uniform.**

## Laundering Graphics – What they mean



Machine Maximum  
Temperature Guide



Iron Spots  
(2 Spots =  
Medium Heat)



Do Not Bleach



Tumble Dry  
Guide  
(Low Heat)



Dry Clean  
(Any Solvent except  
Trichloroethylene)

**For the best Laundering results and to maintain the longevity of your uniform the following is recommended.**

1. Before wearing your new uniform, wash dark and bright colours separately from whites in cold water or on a cool setting to enhance colour stability.
2. To aid colour retention, turn the garment inside out prior to washing.
3. Ideally, visibly contaminated garments should receive a machine 'sluice (rinse) cycle' first, prior to the main wash.
4. Wash garments separately from other clothing/items, in a washing machine at the hottest temperature suitable for the fabric, according to the manufacturer's instructions. Never boil wash.
5. Washing powders and liquids containing Chlorine, Bleaching agents and Optical Brighteners should be avoided to prevent deterioration to the colour or construction of the fabric. It is strongly advised that non-biological washing agents are used. Biological agents can affect colour stability and cause running or fading.
6. Do not overload the washing machine.
7. Garments can be tumble dried at a low temperature only, and pressed when slightly damp. Tumble drying garments to a complete dry state may cause damage and shrinkage.
8. Washer dryers dry at a considerably higher temperature than conventional tumble dryers and therefore the instructions on the garment must be adhered to. This will avoid damage and shrinkage to the garment.
9. If you do not have a tumble dryer / washer dryer, air dry thoroughly before ironing on the hottest setting advised by the manufacturer.
10. For best results, the garment should be ironed inside out until all moisture is gone to prevent creasing. After ironing, garments should be aired before being stored.
11. Store laundered (washed) uniforms in a clean plastic bag when transporting to and from work. Do not carry clean and dirty/soiled uniforms together in the same bag.
12. After handling dirty/soiled uniforms and placing them in the washing machine, wash your hands using soap and water.
13. Clean washing machines and tumble dryers regularly in accordance with manufacturer's instructions.

# Measuring Guide...



## Waist

Measure under the natural waistline, should be the narrowest part. Ensure the tape is level, don't let it dip. Hold the tape loosely, don't pull it tight, make sure you can move the measuring tape from side to side with ease.

## Hip

Standing with feet together, measure around the fullest part of the hips. Ensure the tape is level, don't let it dip. Hold the tape loosely, don't pull it tight, make sure you can move the measuring tape from side to side with ease.

## Inside Leg

Measure along the inside of the leg. From just below the crotch to 1" below the ankle. Ensure the tape is straight not bent.



## Ordering is easy....

Tel: **0161 727 4470** E-mail: **sales@benchmarktrousers.com**

**www.benchmarktrousers.com**

Opening hours: Monday – Thursday 8.00am-6.00pm

Friday 8.00am-4.30pm

### Deliveries

Delivery charges of £5.40 are applicable to any order under the value of £100.00 to the UK mainland.

Please contact our customer services department for carriage charges to Eire and other Worldwide destinations.

Despatch of stocked garments is made within 24 hours using our contracted courier, however, items requiring embroidery, labels or alterations will take longer and confirmed lead-times can be obtained via our customer services department on: 0161 727 4470.

All orders have an internet tracking facility.

Internet orders are despatched via our courier service as listed above or by Royal Mail.

### Returns

You may return stock garments in their original condition within 28 days for an exchange or refund of the cost of the goods but not the cost of the carriage to you. This does not apply to personalised garments, non-stock items and made to order items, as they are non-returnable. The cost of returning items remains your responsibility except where the goods are faulty or incorrectly delivered by Benchmark.

Where goods supplied by Benchmark are found to be defective other than as a consequence of reasons for which the client is responsible, these shall be repaired or replaced by Benchmark free of charge for a period of 6 months. Any further liability shall be expressly excluded.

### Personalisation of Goods

Benchmark is dedicated to making sure you get exactly what you are looking for and the finishing touch to any garment is the name of your organisation or wording of your choice.

Let us know your exact requirements whether it is an existing logo or you are looking for a complete new design and Benchmark will provide a quotation and sample to make sure that you are happy with your choice.

Call us to discuss your requirements on: 0161 727 4470.



**BENCHMARK**

THE SMARTER CHOICE

Tel: **0161 727 4470**

E-mail: **sales@benchmarktrousers.com**

Web: **www.benchmarktrousers.com**



**P&R Fabrics Limited**

1st Floor Hunter House, Holloway Drive  
Wardley Ind. Est., Worsley, Manchester M28 2LA